

# 10V60 DO-201AD

## Trench MOS Barrier Schottky Rectifier

**DO-201AD**  
**10V60**



Cathode   Anode

### Features

- Advanced trench technology
- Low forward voltage drop
- Low power losses
- High efficiency operation
- Lead Free Finish, RoHS Compliant

### Applications

- DC/DC Converters
- AC/DC Adaptors

### Maximum ratings and electrical characteristics (T<sub>J</sub> = 25°C unless otherwise noted)

Parameter		Symbol	Limit		Unit	
Maximum repetitive peak reverse voltage		V <sub>RRM</sub>	60		V	
Maximum average forward rectified current		I <sub>F(AV)</sub>	10		A	
Peak forward surge current 8.3 ms single half sine-wave superimposed on rated load per diode		I <sub>FSM</sub>	200		A	
Operating junction and storage temperature range		T <sub>J</sub> , T <sub>STG</sub>	-40 to +150		°C	
Typical thermal resistance per diode (Mounted on FR-4 PCB)		R <sub>θJC</sub>	22		°C/W	
Instantaneous forward voltage		V <sub>F(1)</sub>	TYP.	MAX.	V	
	I <sub>F</sub> =3A		T <sub>J</sub> =25°C	0.38		0.42
	I <sub>F</sub> =3A		T <sub>J</sub> =125°C	0.31		-
	I <sub>F</sub> =10A		T <sub>J</sub> =25°C	0.45		-
	I <sub>F</sub> =10A	T <sub>J</sub> =125°C	0.39	-		
Instantaneous reverse current per diode at rated reverse voltage	T <sub>J</sub> =25°C	I <sub>R(2)</sub>	-	80	uA	
	T <sub>J</sub> =125°C		-	10	mA	

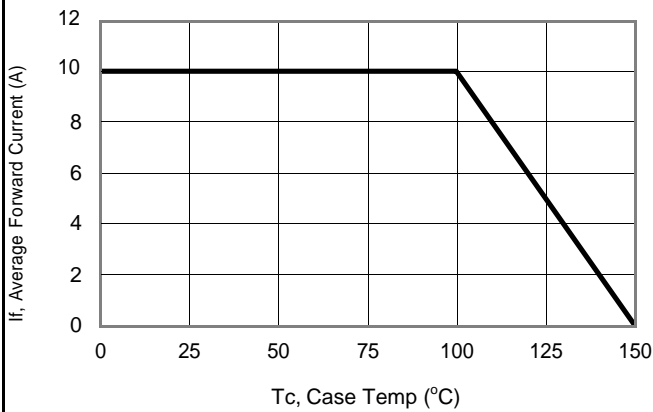
Notes:

(1) Pulse test: 300 μs pulse width, 1 % duty cycle

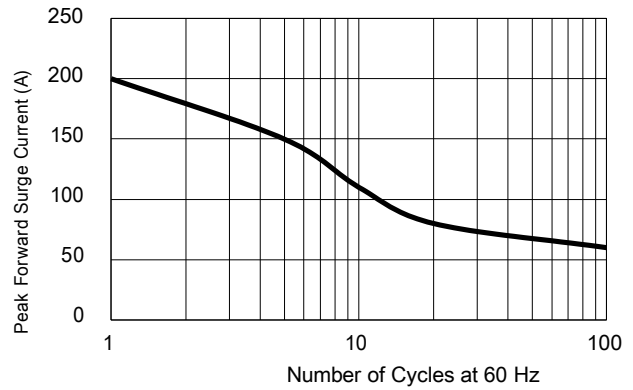
(2) Pulse test: Pulse width ≤ 40 ms

# 10V60 DO-201AD

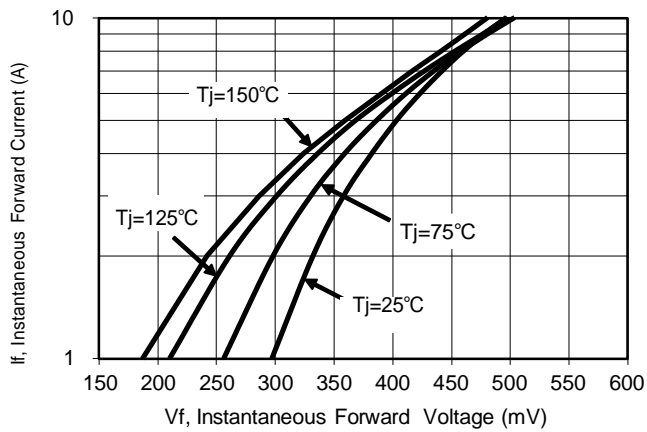
## RATINGS AND CHARACTERISTICS CURVES (TA = 25 °C unless otherwise noted)



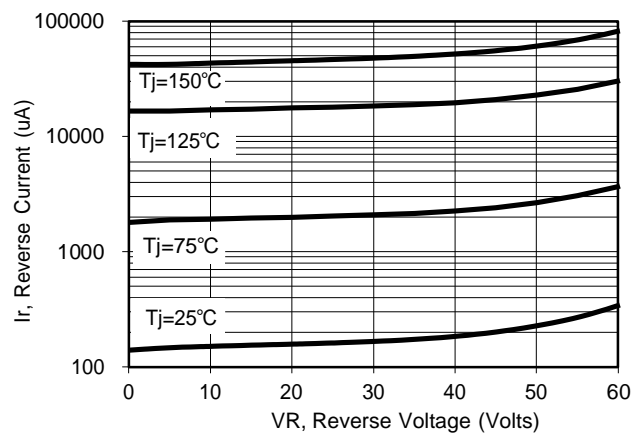
**Current Derating, Case**



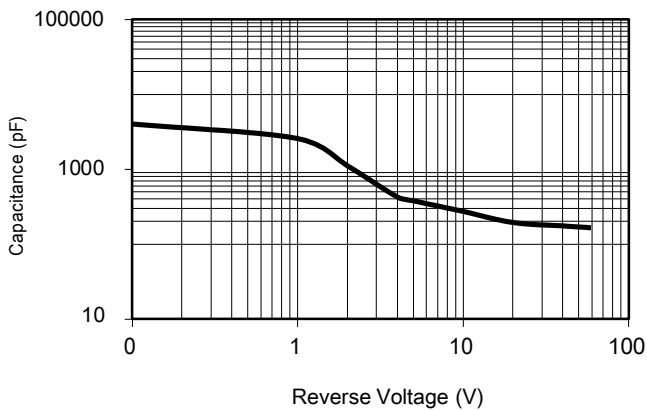
**Maximum Repetitive Surge Current**



**Typical Forward Voltage**



**Typical Reverse Current**

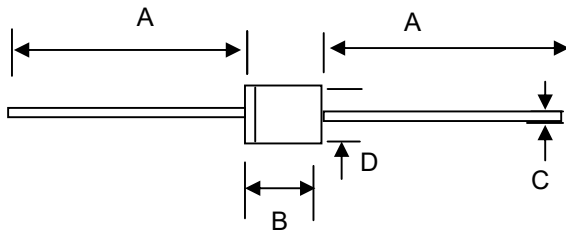


**Typical Junction Capacitance**

# 10V60 DO-201AD

## PACKAGE OUTLINE

### DO-201AD



DO-201AD		
Dim.	Min.	Max.
A	25.4	-
B	7.3	9.5
C	1.2	1.3
D	4.8	5.3
All Dimensions in mm		